

Racing Line (Titanium)

Produkt-Code: **S-Y9R1-HAFT** **EC** **EPA** **CARB**

The Akrapović Racing system is designed for riders who demand maximum performance. Racing system is lighter if compared to stock exhaust system and features exceptional production quality, hi-tech materials and of course increased engine performance combined with pure racing sound output.

TECH. DATEN	EINHEIT	ORIGINAL	AKRAPOVIČ	MAX. WERTE
Maximale Leistung	kW	82.2 bei 9900 rpm	86.2 bei 9900 rpm	+ 4 bei 9900 rpm
	PS (m)	111.8 bei 9900 rpm	117.2 bei 9900 rpm	+ 5.4 bei 9900 rpm
	PS (i)	110.3 bei 9900 rpm	115.6 bei 9900 rpm	+ 5.3 bei 9900 rpm
Maximales Drehmoment	Nm	87.7 bei 8400 rpm	89.9 bei 8750 rpm	+ 5.3 bei 5000 rpm
	lb-ft	64.7 bei 8400 rpm	66.3 bei 8750 rpm	+ 3.9 bei 5000 rpm
Gewicht	kg	8.4	6	- 2.4
	lb	18.5	13.2	- 5.3
Statische Geräuschpegel	dB	94	94	0
	rpm	5000	5000	0

gemessen mit: Yamaha MT-09 2014

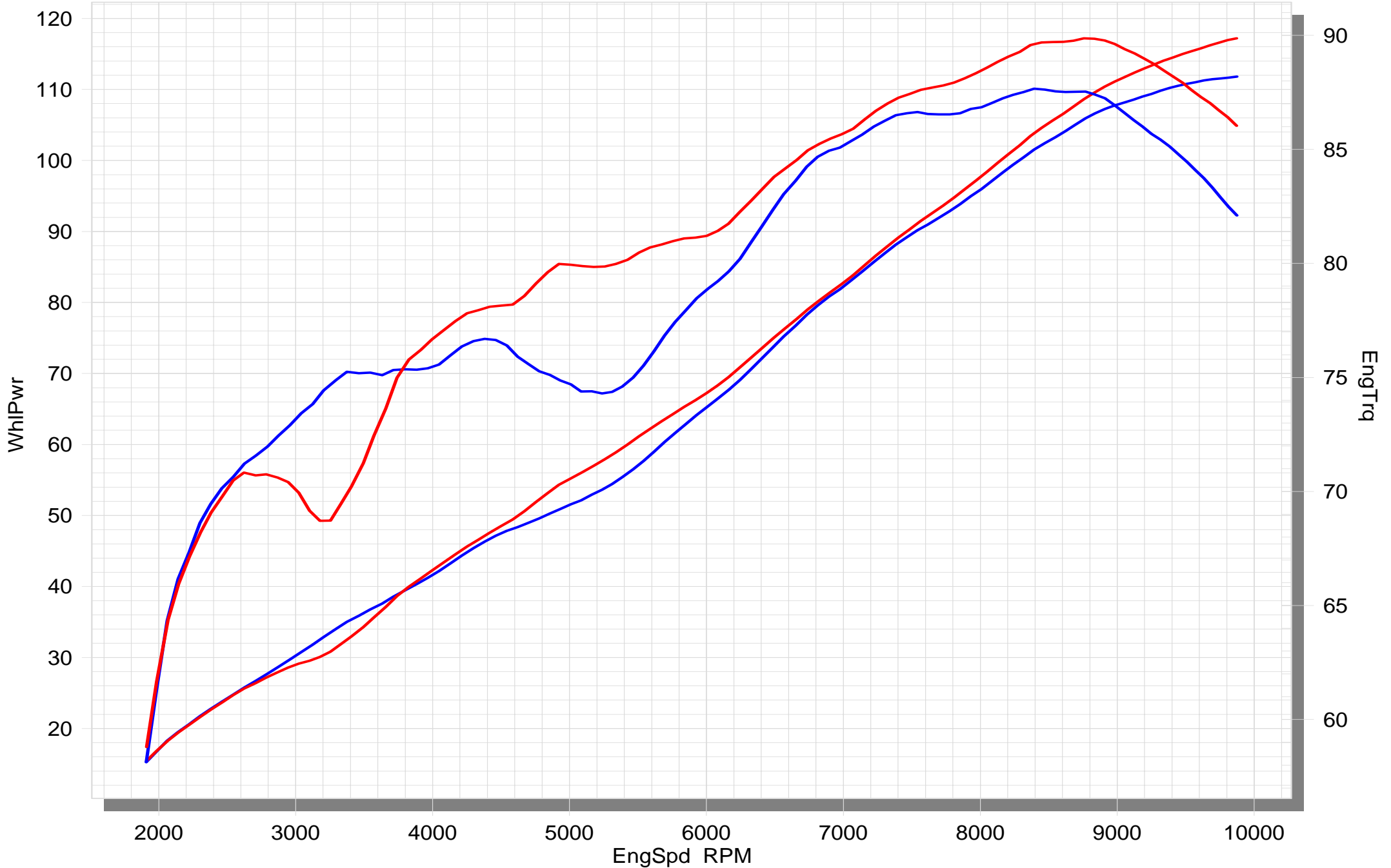
Optionale Teile

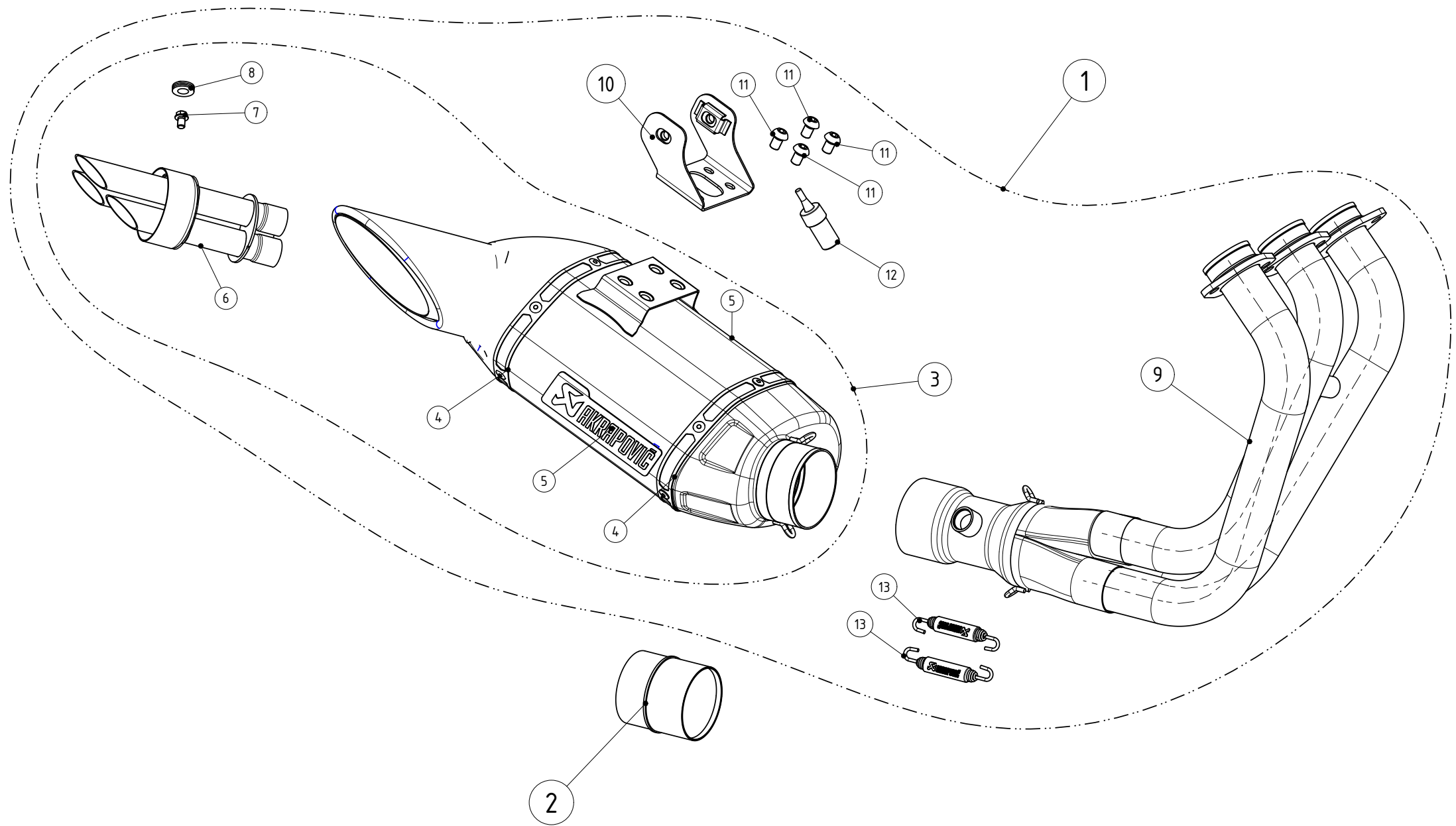
Produkt-Code: **Catalytic converter**
 Produkt name: **P-KAT-028**

YAMAHA MT-09

STOCK

RACING





MUFFLER REPAIR KITS	
REPACK	14
SLEEVE	15

No.	SALES CODE	DESCRIPTION	QTY.
1	S-Y9R1-HAFT	racing system	1
2	P-KAT-028	catalyst	1
3	M-HAF00201T	muffler	1
4	P-TT53	belt TI for TI sleeve	2
5	P-HST6AL	sticker	2
6	V-TUV142	muffler insert SS	1
7	P-FB28	bolt	1
8	P-GUV004	rubber insert	1
9	H-Y8R2	header SS	1
10	P-X127	bracket SS	1
11	P-FB42	bolt	4
12	P-LT1	screw sealant	1
13	P-S1/2	spring	2
14	P-RPCK97	muffler repack kit	1
15	P-RKS397AF195	muffler sleeve kit	1