



Slip-On Line (Carbon)

Product code: **S-S10S08-HRC**

MSRP ex. VAT:

The Akrapovič Slip-On system is designed for riders who are looking for a base-level exhaust system modification. It is an excellent combination of performance, production quality and affordability.

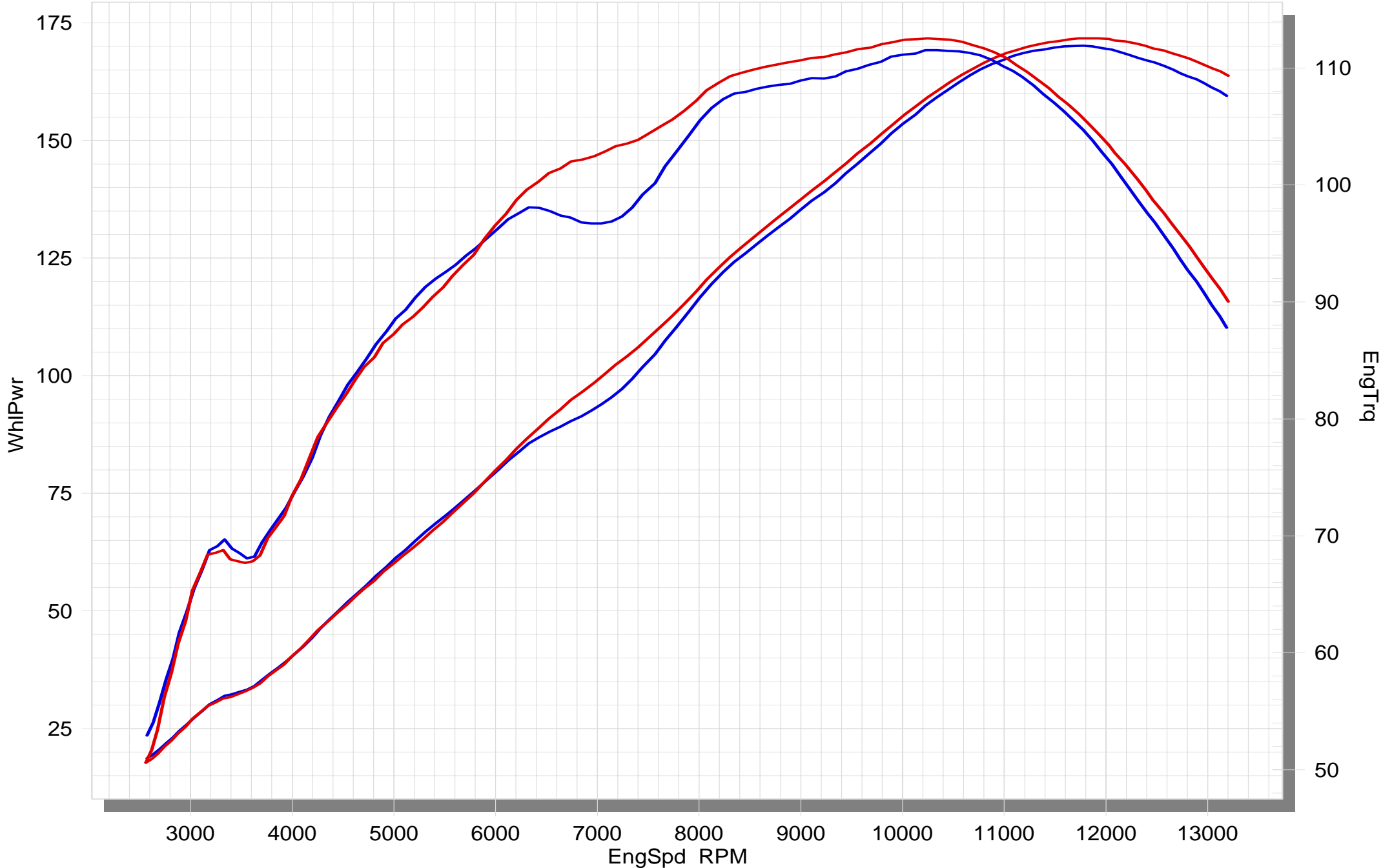
| TECHNICAL DATA | UNIT | STOCK | AKRAPOVIČ | MAX. GAIN |
|--------------------|--------|--------------------|--------------------|-------------------|
| maximum power | kW | 125.2 at 11750 rpm | 126.3 at 11750 rpm | + 4.6 at 7200 rpm |
| | HP (m) | 170.2 at 11750 rpm | 171.7 at 11750 rpm | + 6.2 at 7200 rpm |
| | HP (i) | 167.9 at 11750 rpm | 169.4 at 11750 rpm | + 6.1 at 7200 rpm |
| maximum torque | Nm | 111.5 at 10200 rpm | 112.5 at 10250 rpm | + 6.1 at 7050 rpm |
| | lb-ft | 82.2 at 10200 rpm | 83 at 10250 rpm | + 4.5 at 7050 rpm |
| weight | kg | 2.5 | 1.5 | - 1 |
| | lb | 5.5 | 5.5 | - 2.2 |
| static noise level | dB | 96 | 96 | 0 |
| | rpm | 5750 | 5750 | 0 |

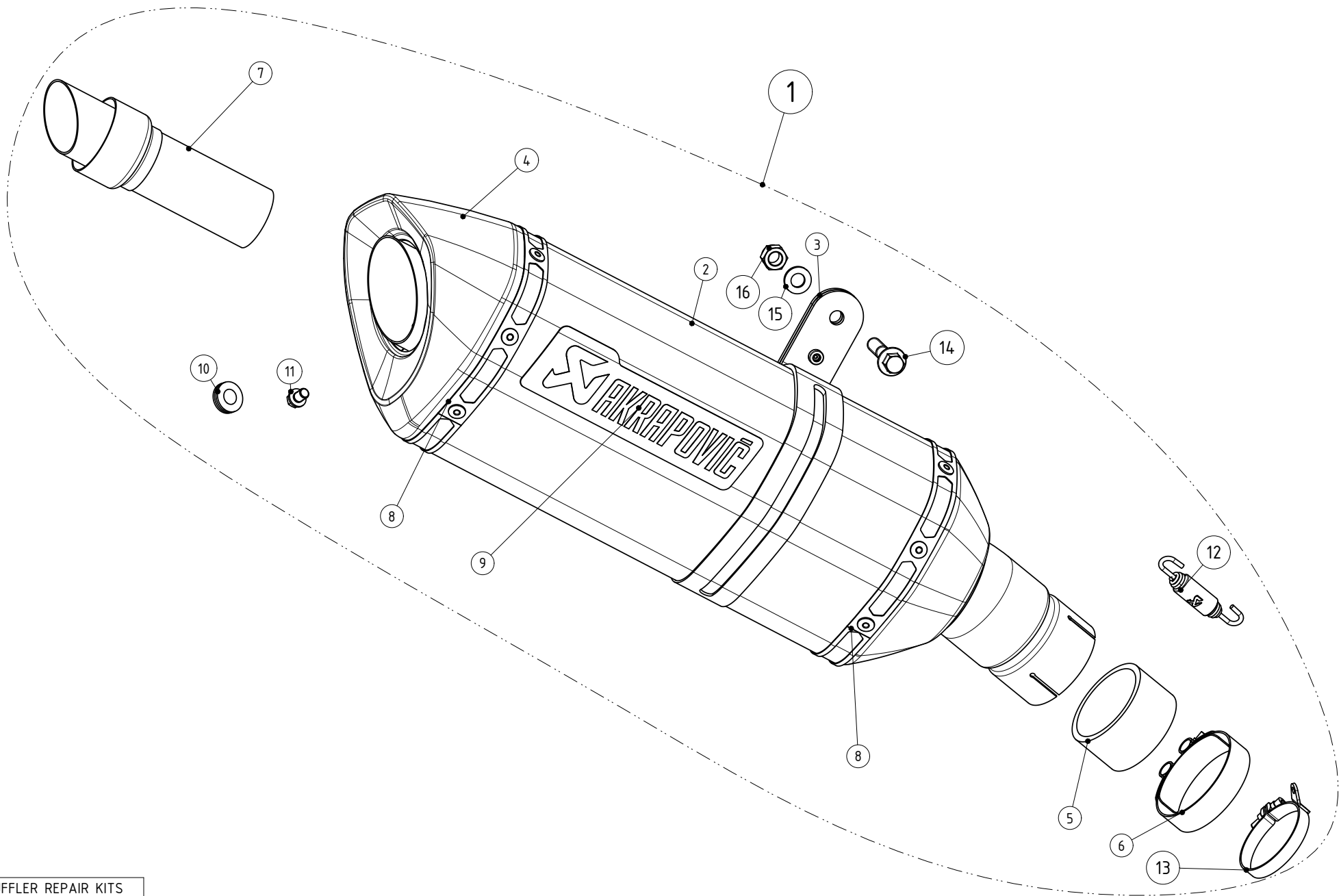
measured with: Suzuki GSX-R 1000 2012

SUZUKI GSX-R 1000

STOCK

SLIP-ON





MUFFLER REPAIR KITS

| | |
|-----------|----|
| REPACK | 17 |
| CA SLEEVE | 18 |
| Ti SLEEVE | 19 |

| No. | SALES CODE | DESCRIPTION | QTY. |
|-----|--------------|--|------|
| 1 | S-S10SO8-HRC | S SU GSX-R1 HSO 12 MTCC | 1 |
| 2 | M-HR03205C | M HR032 T58R1 C300/57 C59R7 | 1 |
| 3 | P-MCCR26 | MC CA R CA 25/8,5/108/32 CR26X | 1 |
| 4 | V-EC174 | SRO zad. CA R7 CA za SU GSX-R1 SO,E,R 12 | 1 |
| 5 | P-G51 | tesnilo grafit D56/D48,4×30 G51 | 1 |
| 6 | P-R20 | objemka SS D59×16 M6×30 | 1 |
| 7 | V-TUV081 | vložek ses. HOM SS D38/78/53/59° | 1 |
| 8 | P-TT20 | trak zak. TI L=414,5 S=16 R CA TT20 | 2 |
| 9 | P-HST2AL | nalepka Akrap. HOR 150 AL | 1 |
| 10 | P-GUV004 | gumi vložek D18 nased-D13 logotip | 1 |
| 11 | P-FB28 | vijak imb. leca SS M6×8 ISO7380 FB28 | 1 |
| 12 | P-S2 | vzmet SS D10×60 Tip1 z zašč. gumo S2 | 1 |
| 13 | P-R2HL | objemka s kavljem SS D47×8 L | 1 |
| 14 | P-FB23 | vijak šest. prirob FE M8×45 SC | 1 |
| 15 | P-DR4 | podložka SS D8,5/D24×2 ISO7093 | 1 |
| 16 | P-FN4 | matica šestr. prirob FE M8 SC DIN 6923 | 1 |
| 17 | P-RPCK48 | MMRCK tip 48 | 1 |
| 18 | P-RKS328RC30 | MRRSK tip 328 CR30 C300R | 1 |



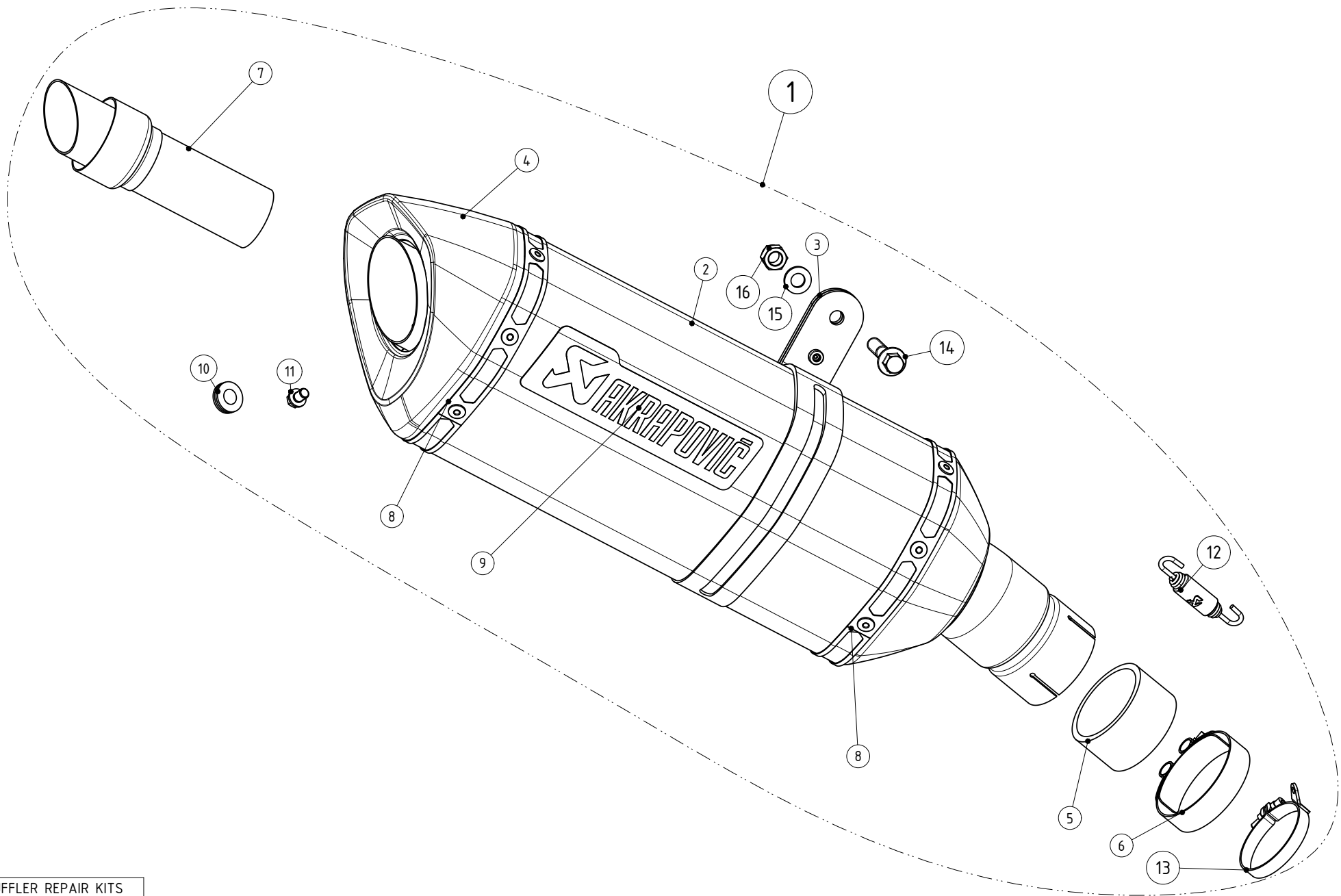
Slip-On Line (Titanium)

Product code: **S-S10SO8-HRT**
MSRP ex. VAT:

The Akrapovič Slip-On system is designed for riders who are looking for a base-level exhaust system modification. It is an excellent combination of performance, production quality and affordability.

| TECHNICAL DATA | UNIT | STOCK | AKRAPOVIČ | MAX. GAIN |
|--------------------|--------|--------------------|--------------------|-------------------|
| maximum power | kW | 125.2 at 11750 rpm | 126.3 at 11750 rpm | + 4.6 at 7200 rpm |
| | HP (m) | 170.2 at 11750 rpm | 171.7 at 11750 rpm | + 6.2 at 7200 rpm |
| | HP (i) | 167.9 at 11750 rpm | 169.4 at 11750 rpm | + 6.1 at 7200 rpm |
| maximum torque | Nm | 111.5 at 10200 rpm | 112.5 at 10250 rpm | + 6.1 at 7050 rpm |
| | lb-ft | 82.2 at 10200 rpm | 83 at 10250 rpm | + 4.5 at 7050 rpm |
| weight | kg | 2.5 | 1.5 | - 1 |
| | lb | 5.5 | 5.5 | - 2.2 |
| static noise level | dB | 96 | 96 | 0 |
| | rpm | 5750 | 5750 | 0 |

measured with: Suzuki GSX-R 1000 2012



MUFFLER REPAIR KITS

| | |
|-----------|----|
| REPACK | 17 |
| CA SLEEVE | 18 |
| Ti SLEEVE | 19 |

| No. | SALES CODE | DESCRIPTION | QTY. |
|-----|--------------|--|------|
| 1 | S-S10SO8-HRT | S SU GSX-R1 HSO 12 MTTC | 1 |
| 2 | M-HR03205T | M HR032 T58R1 T300/57 C59R7 | 1 |
| 3 | P-MCTR26 | MC CA R TI 25/8,5/108/32 TR26X | 1 |
| 4 | V-EC175 | SRO zad. CA R7 TI za SU GSX-R1 SO,E,R 12 | 1 |
| 5 | P-G51 | tesnilo grafit D56/D48,4×30 G51 | 1 |
| 6 | P-R20 | objemka SS D59×16 M6×30 | 1 |
| 7 | V-TUV081 | vložek ses. HOM SS D38/78/53/59° | 1 |
| 8 | P-TT13 | trak zak. TI L=410 S=16 R TI TT13 | 2 |
| 9 | P-HST2AL | nalepka Akrap. HOR 150 AL | 1 |
| 10 | P-GUV004 | gumi vložek D18 nased-D13 logotip | 1 |
| 11 | P-FB28 | vijak imb. leca SS M6×8 ISO7380 FB28 | 1 |
| 12 | P-S2 | vzmet SS D10×60 Tip1 z zašč. gumo S2 | 1 |
| 13 | P-R2HL | objemka s kavljem SS D47×8 L | 1 |
| 14 | P-FB23 | vijak šest. prirob FE M8×45 SC | 1 |
| 15 | P-DR4 | podložka SS D8,5/D24×2 ISO7093 | 1 |
| 16 | P-FN4 | matica šestr. prirob FE M8 SC DIN 6923 | 1 |
| 17 | P-RPCK48 | MMRCK tip 48 | 1 |
| 18 | P-RKS327RT30 | MRRSK tip 327 TR30 T300R | 1 |