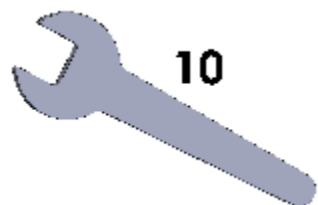
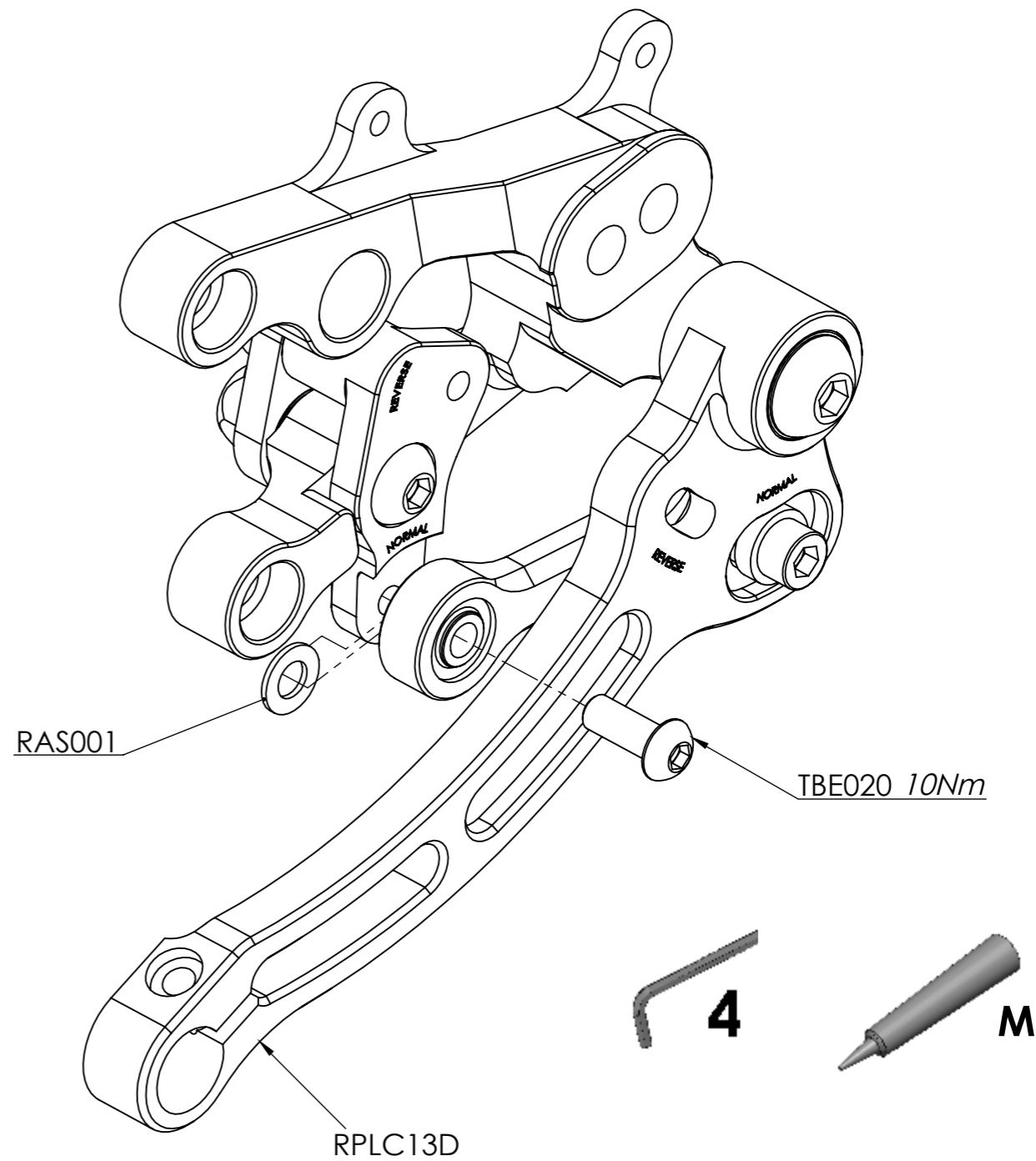
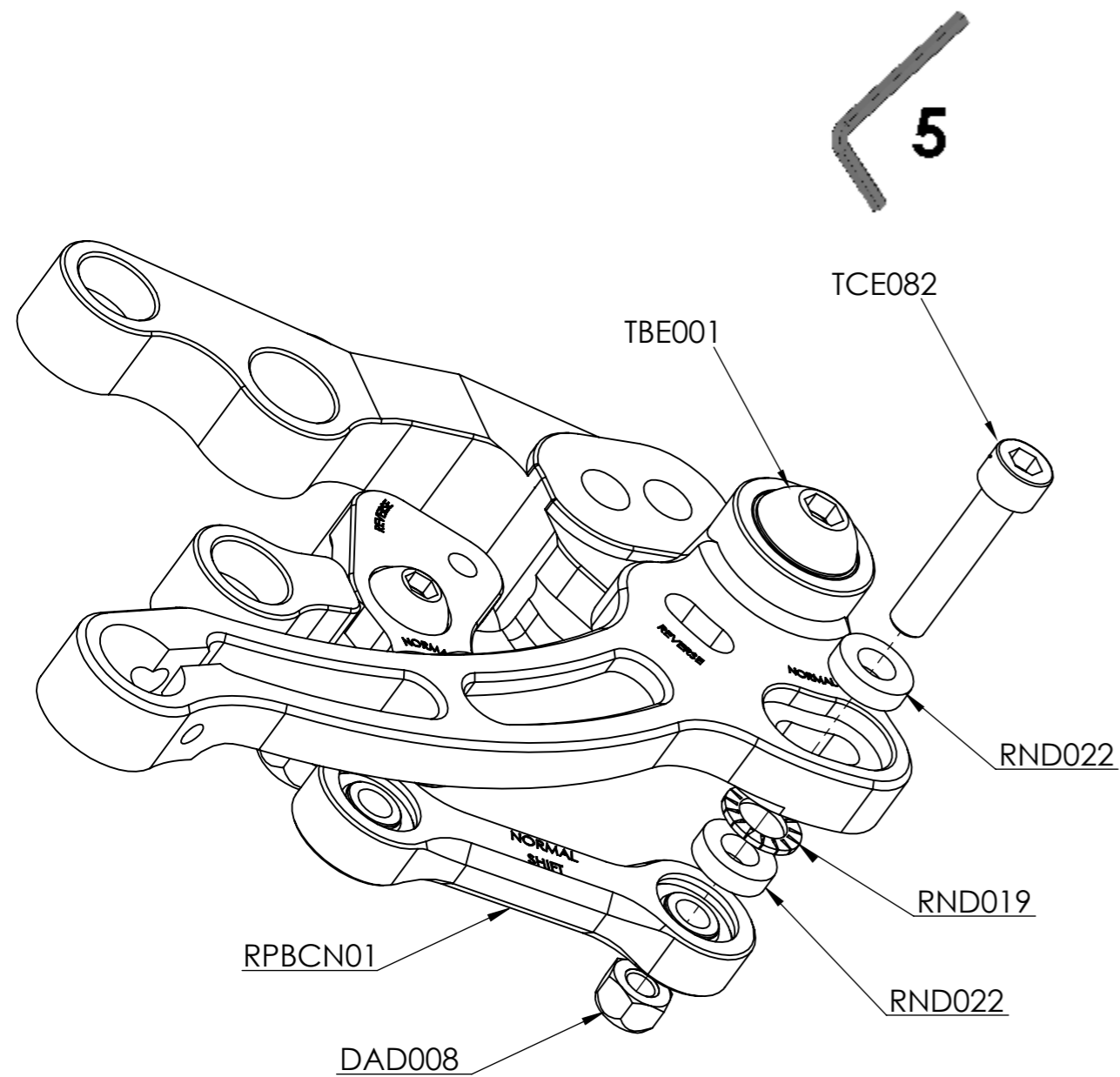


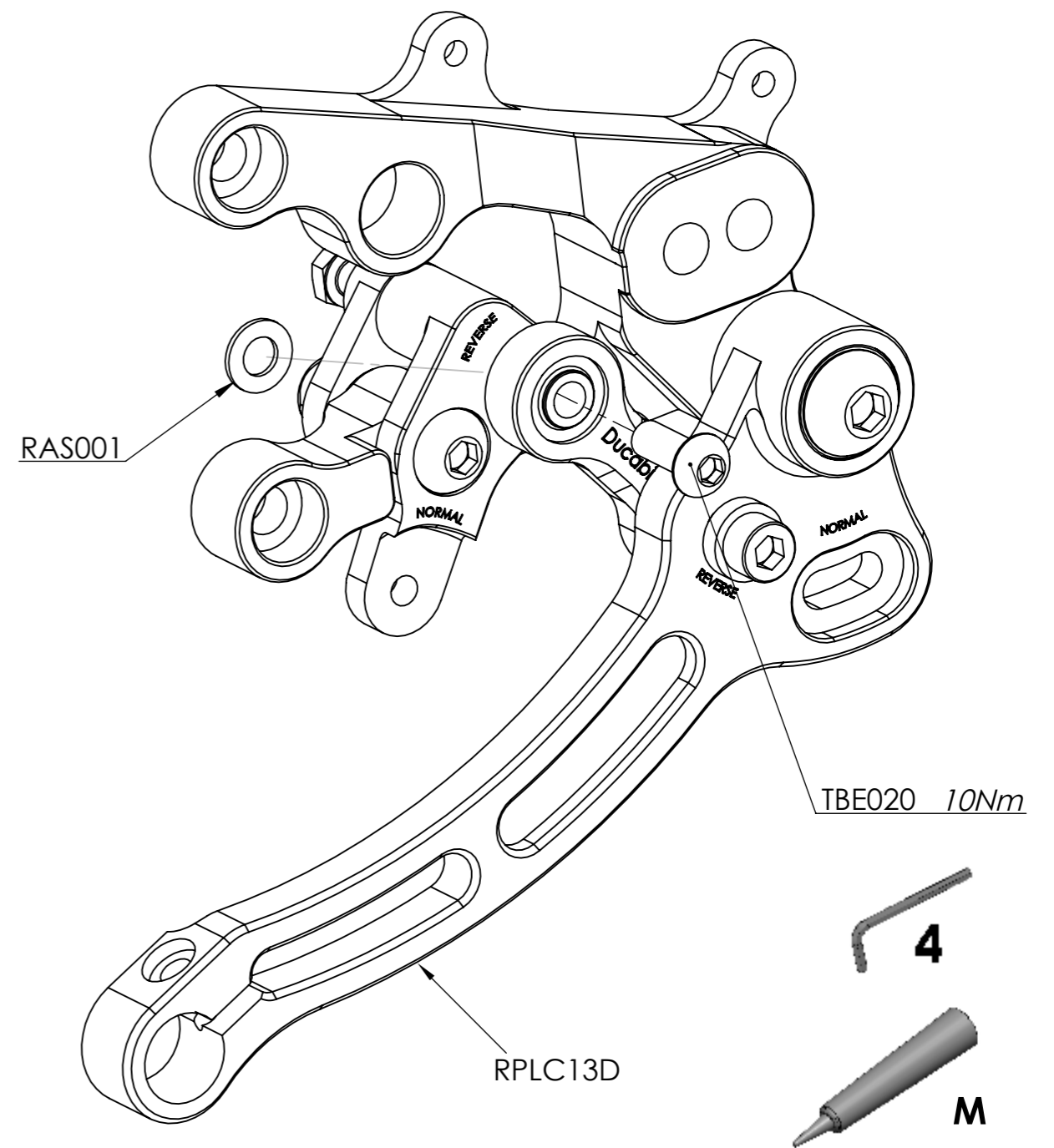
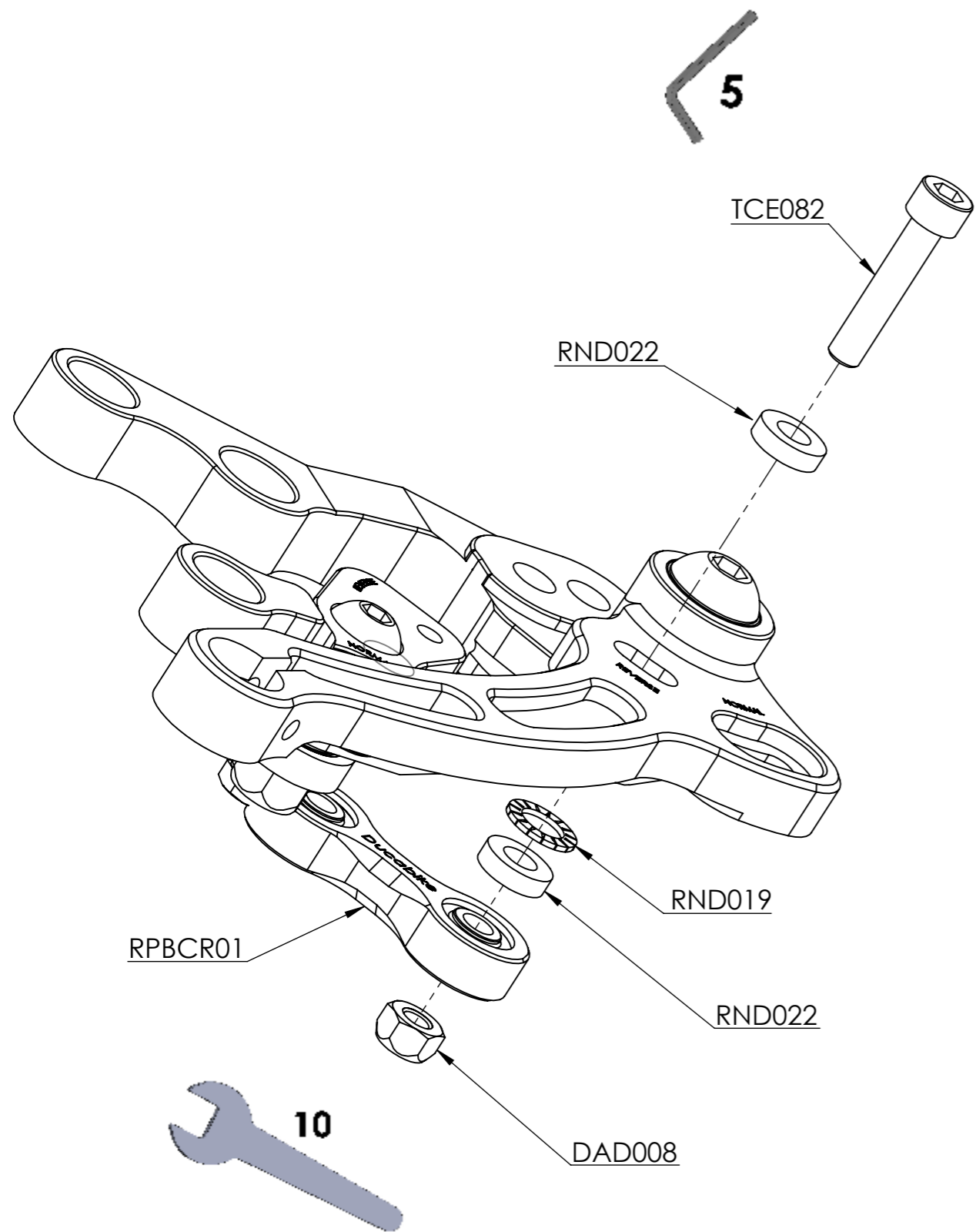
PULIRE / SGRASSARE CLEAN / DEGREASE	LUBRIFICARE LUBRICATE	BLOCCARE CON FRENAFLETTI DI TENUTA: L=LEGGERA - M=MEDIA - S=FORTE LOCK ON WITH THE FOLLOW THREADLOCK: L=LIGHT HOLD - M=MEDIUM HOLD - S=STRONG HOLD
 DUCABIKE		ARTICOLO
		PR119903
ISTRUZIONI - INSTRUCTION		
PEDANE REGOLABILI - ADJUSTABLE REARSETS PANIGALE		
<small>ATTENZIONE: Questo prodotto potrebbe non essere conforme al codice stradale quindi usare solo in aree private e/o chiuse al traffico WARNING: This product may not comply with local road rules and can be used only in private areas and/or areas closed to traffic.</small>		



10

CAMBIO NORMALE - *NORMAL SHIFT*

<p>PULIRE / SGRASSARE CLEAN / DEGREASE</p> 	<p>LUBRIFICARE LUBRICATE</p> 	<p>BLOCCARE CON FRENAFILETTI DI TENUTA: L=LEGGERA - M=MEDIA - S=FORTE LOCK ON WITH THE FOLLOW THREADLOCK: L=LIGHT HOLD - M=MEDIUM HOLD - S=STRONG HOLD</p> 
 <p>DUCABIKE</p>	<p>ARTICOLO PR119903</p>	<p>ISTRUZIONI - INSTRUCTION</p> <p>PEDANA REGOLABILE SX PANIGALE <i>ADJUSTABLE REARSETS LF PANIGALE</i></p>
	<p><small>ATTENZIONE: Questo prodotto potrebbe non essere conforme al codice stradale quindi usare solo in aree private e/o chiuse al traffico WARNING: This product may not comply with local road rules and can be used only in private areas and/or areas closed to traffic</small></p>	



CAMBIO ROVESCIO - REVERSE SHIFT

PULIRE / SGRASSARE CLEAN / DEGREASE	LUBRIFICARE LUBRICATE	BLOCCARE CON FRENAFILETTI DI TENUTA: L=LEGGERA - M=MEDIA - S=FORTE LOCK ON WITH THE FOLLOW THREADLOCK: L=LIGHT HOLD - M=MEDIUM HOLD - S=STRONG HOLD
 DUCABIKE	ARTICOLO PR119903	ISTRUZIONI - INSTRUCTION PEDANA REGOLABILE SX PANIGALE ADJUSTABLE REARSETS LF PANIGALE
	<small>ATTENZIONE: Questo prodotto potrebbe non essere conforme al codice stradale quindi usare solo in aree private e/o chiuse al traffico WARNING: This product may not comply with local road rules and can be used only in private areas and/or areas closed to traffic</small>	