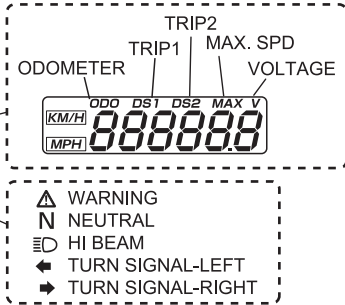
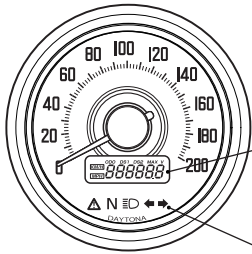
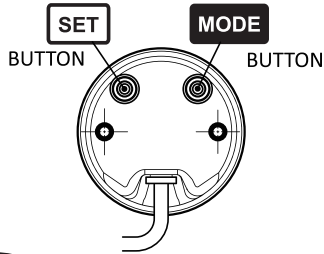
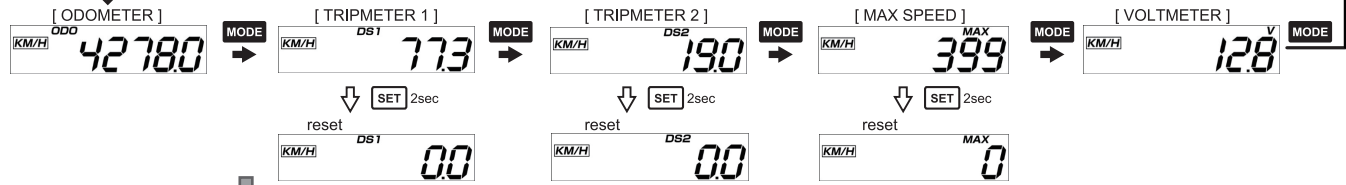


BUTTON OPERATION AND SETUP

⚠ Read all instructions before setting.
Especially for "speed calibration", initially decide which way you will do from 3 types.



NORMAL MODE



SETUP MODE



UNIT SETUP (KM/H or MPH)

At SETUP MODE, choose UNIT SETUP and hold down SET for 2 seconds.

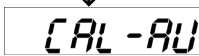


To switch between "KM/H" and "MPH", press MODE.

Hold down SET for 2 seconds. The display goes back to NORMAL MODE.

SPEED CALIBRATION

At SETUP MODE, choose SPEED CALIBRATION and hold down SET for 2 seconds. You can choose one way from 3 types of calibration.



AUTO CALIBRATION MODE

When ready to drive, hold down SET for 2 seconds.



Press MODE.



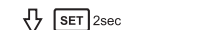
Drive exactly one(1) kilometer/mile. (When driving, the display counts number of pulse obtained from sensor.)



After driving one(1) kilometer/mile, stop the vehicle and press MODE to finish the setting.



Hold down SET for 2 seconds. The display goes back to NORMAL MODE.



SPEED ADJUST MODE

When ready to drive, hold down SET for 2 seconds.



Start driving following another vehicle running at constant speed of 40km/h(MPH).



Press MODE in driving at actual speed 40km/h(MPH) to finish the setting.



The display will start indicating the current speed after a while and automatically goes back to NORMAL MODE.



MANUAL MODE

Calculate the value of "pulse per km" by A + B

A pulses per revolution

Enter the AUTO CALIBRATION MODE, turn the wheel exactly 10 revolutions. The display shows the pulses per 10 revolutions. Divide this value by 10.

B tyre circumference (km)

Measure your tyre circumference in "cm" and divide by 100,000 to be "km".

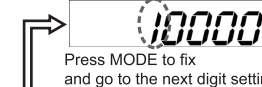
A + B = pulses per km

Then enter MANUAL MODE and input this value as follows.

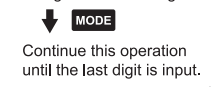
Hold down SET for 2 seconds.



Flashing digit is changeable. To modify the number, press SET.



Press MODE to fix and go to the next digit setting.



Continue this operation until the last digit is input.



Hold down SET for 2 seconds. The display goes back to NORMAL MODE.

OPTIONAL PARTS

